



NUNA®

Bugaboo car seat in  
collaboration with Nuna



Nuna Baby Essentials, Inc.  
70 Thousasnd Oaks Blvd. |  
Morgantown, PA 19543  
1.855.NUNA.USA | nunababy.com

[www.nunababy.com](http://www.nunababy.com)  
[www.bugaboo.com](http://www.bugaboo.com)



meet your bugaboo turtle  
by Nuna

bugaboo®

nothing like a Bugaboo

compatible with:



bugaboo fox



bugaboo lynx

bugaboo turtle by Nuna is based on the Nuna PIPA™ model

**IMPORTANT** — Read these instructions carefully before use and keep for future reference.

# Contents

## **Product Information**

Product Registration	4
Recall Information	4
Warranty	5
Contact	5

<b>Child Usage Requirements</b>	5
---------------------------------	---

<b>Warnings</b>	6
-----------------	---

<b>Vehicle Compatibility</b>	9
------------------------------	---

<b>Infant Car Seat Parts List</b>	12
-----------------------------------	----

<b>Base Parts List</b>	14
------------------------	----

<b>Product Overview</b>	16
-------------------------	----

<b>Product Use</b>	26
--------------------	----

<b>Installation</b>	30
---------------------	----

<b>Cleaning and Maintenance</b>	49
---------------------------------	----

# Product Information

Model Number: \_\_\_\_\_

Manufactured in (date): \_\_\_\_\_

## Product Registration

Please fill in the above information. The model number and the manufactured in date are located on a label on the bottom of your child restraint. Fill out the prepaid registration postcard attached to the seat pad and mail it today.

Child restraints could be recalled for safety reasons. You must register this restraint to be reached in a recall. Send your name, address, e-mail address if available and the child restraint's model number and manufacturing date to:

Nuna Baby Essentials Inc.  
70 Thousand Oaks Blvd.  
Morgantown, PA 19543

or call 1.855.NUNA.USA

or register online at:

[www.nunababy.com/register-car-seat](http://www.nunababy.com/register-car-seat)

## Recall Information

For recall information, call the U.S. Government's Vehicle Safety Hotline at: 1.888.327.4236 (TTY: 1.800.424.9153) or go to <http://www.NHTSA.gov>

## Warranty

We have purposely designed our high-quality products so that they can grow with both your child and your family. Because we stand by our product, our gear is covered by a custom warranty per product, starting from the day it was purchased. Please have the proof of purchase, model number and manufactured in date available when you contact us.

**For warranty information please visit:**

[www.nunababy.com/usa/warranty](http://www.nunababy.com/usa/warranty)

## Contact

For replacement parts, service, or additional warranty questions, please contact our customer service department.

**In the USA:**

[infousa@nunababy.com](mailto:infousa@nunababy.com)

[www.nunababy.com](http://www.nunababy.com)

1.855.NUNA.USA

## Child Usage Requirements

This child restraint is suitable for use with children who meet the following requirements:

**Weight:** 4 to 32 lb (2 to 14.5 kg)

**Height:** less than 32 inches (81 cm)

It is recommended to keep your child rear facing as long as possible, until at least 2 years old.



## **! WARNING**


Failure to follow these warnings, instructions and labels on the child restraint could result in serious injury or death.

A child's safety is your responsibility. **NEVER** leave your child unattended.


Read all instructions before use of this child restraint or installation in a vehicle. In addition, read the vehicle owner's manual for information on child restraint installation.

Use the bottom of the base for storage of the instruction manual.

Register your child restraint with the manufacturer.



This child restraint can **ONLY** be used in a rear facing position when using in a vehicle. The child restraint cannot be properly secured in a forward facing position, and will be unsafe. Use only with children who weigh between 4 and 32 pounds (2 and 14.5 kg) and whose height is 32 inches (81 cm) or less. Exceeding these height and weight limits is unsafe.



Cover the child restraint when your vehicle is parked in sunlight. Parts of a child restraint can become very hot if left in the sun, and can burn a child's skin. Check for hot parts before putting your child in the child restraint.

Secure this child restraint with the vehicle's child restraint anchorage system if available, or with a vehicle belt.

Replace this child restraint if it has been involved in a crash, even if it was minor and there appears to be no damage to the child restraint.

Snugly adjust the belts provided with this child restraint around your child. If straps are not snugly adjusted, child may be ejected from seat in the event of an accident.

A snug strap should not allow any slack. It lies in a relatively straight line without sagging. It does not press on the child's flesh or push the child's body into an unnatural position.

**EXPIRATION DATE** Check the label on the underside of the base or child restraint for expiration date information.

**FALL HAZARD** Child's activity can move carrier. **NEVER** place carrier on counter tops, tables, or any other elevated surface. Always stay within arm's reach whenever carrier is not on floor/ground. Be sure handle locks into position before lifting carrier.

**STRANGULATION HAZARD** Children have strangled in loose or partially buckled harness straps. Fully restrain the child even when carrier is used outside the vehicle.

**SUFFOCATION HAZARD** Infant carrier can roll over on soft surfaces and suffocate child. Never place carrier on beds, sofas, or other soft surfaces.

**ALWAYS** check child restraint to base connection.



**DO NOT** allow anyone who has not read the instruction manual to install or use this child restraint.

**DO NOT** allow child restraint or handle to contact the vehicle interior (side of car door or seat in front) when installed on base.

**DO NOT** use child restraint if it has frayed or cut harness straps, or is damaged in any way. To find out if damaged parts are replaceable, call 1-855-NUNA-USA.

**DO NOT** use any products or accessories with this child restraint unless they are approved by Nuna for use with this child restraint. Doing so may be unsafe and may void the warranty.

**DO NOT** leave child restraint and base in vehicle when uninstalled, even when unoccupied. In a crash, it could become a projectile and injure other vehicle occupants.

**NEVER** modify any part of the child restraint.

**NEVER** use clothing or blankets that interfere with providing a properly tightened harness. An unsecured or improperly harnessed child can come out of the restraint during a crash. Place blankets over child **AFTER** harness has been properly tightened.

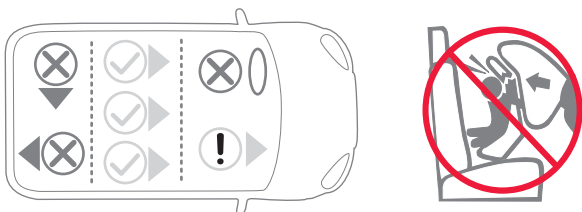
**NEVER** place carrier on top of a shopping cart. Carrier will not be properly secured and could fall.

Only use with Bugaboo strollers Fox and Lynx.

## Vehicle Compatibility

You **MUST** read and understand **ALL** child restraint related instructions and warnings in your vehicle owner's manual to correctly and safely use this child restraint in your vehicle.

This child restraint can **ONLY** be installed on vehicle seats that face forward. **DO NOT** install in seats that face to the sides or rear of the vehicle.



**NEVER** install this child restraint rear facing in a vehicle seating position with a frontal air bag unless it is turned off. Airbags inflate with great force and can cause severe injury to a child's neck and spine. If your vehicle is equipped with passenger side air bags, check your vehicle owner's manual for child restraint installation instructions.

According to accident statistics, children are safer when properly restrained in the rear seating positions than in the front seating positions.

Refer to your vehicle owner's manual to determine if the belts in your vehicle lock by switching the seat belt's retractor **OR** if they have a locking latch plate that locks the vehicle's seat belt so they will hold the child restraint tightly without loosening.

Vehicle belts that **CANNOT BE USED** with your child restraint:

**1 - Motorized Belts (Automatic)**

These should not be used unless the shoulder belt can be removed, the lap belt is locked and use is allowed by the vehicle manufacturer.

**2 - Dual Retractor Lap/Shoulder Belts**

If allowed by the manufacturer, the lap belt only may be used to secure the child restraint in accordance with this manual and the vehicle owner's manual.

**3 - Non-Locking (ELR) Lap Belts**

This belt locks in a crash or sudden stop and should only be used with a belt shortening clip. Contact your vehicle manufacturer if needed.

**4 - Airbag/Inflatable Belts**

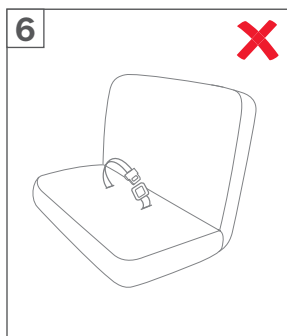
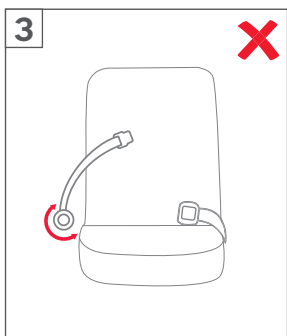
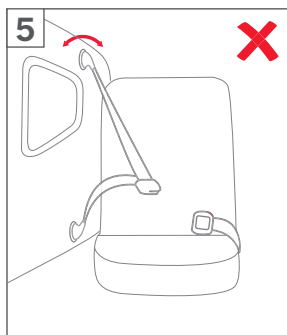
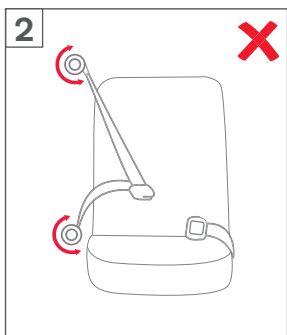
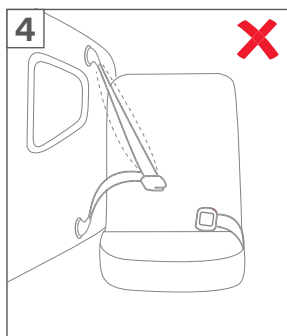
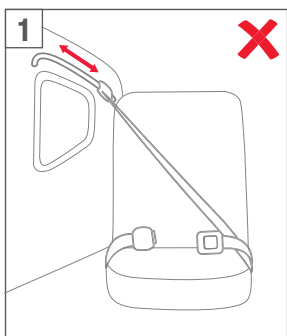
This belt cannot be used to install this child restraint.

**5 - Door Mounted Belts**

This belt cannot be used to install this child restraint.

**6 - Lap Belts forward of Seat Bight**

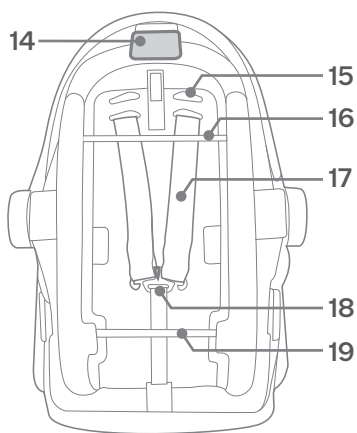
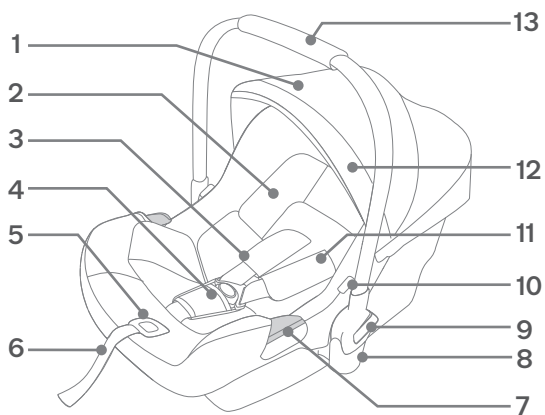
This belt (where the seat bottom and seat back meet) should not be used to install this child restraint.



## Infant Car Seat Parts List

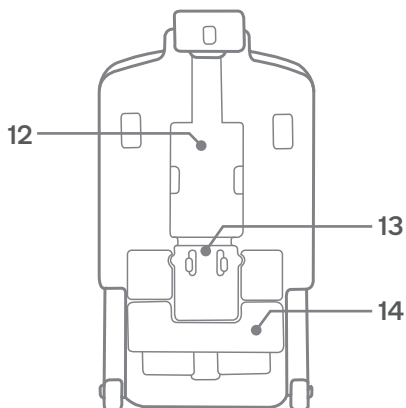
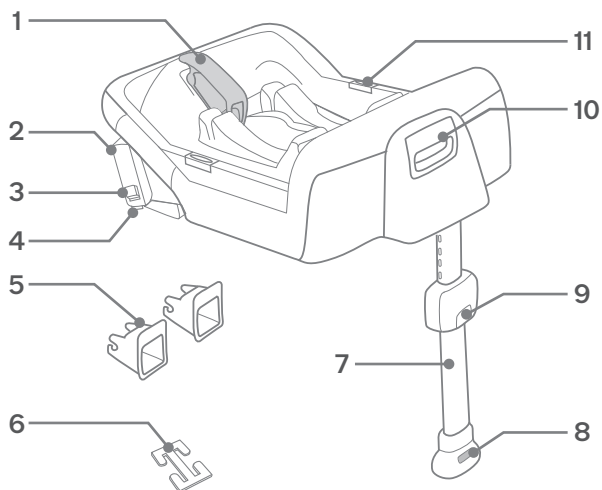
- |    |                               |    |                     |
|----|-------------------------------|----|---------------------|
| 1  | Canopy                        | 11 | Shoulder Pads       |
| 2  | Infant Insert                 | 12 | Seat Cover          |
| 3  | Chest Clip                    | 13 | Handle              |
| 4  | Buckle and Crotch Belt        | 14 | Shoulder Belt Guide |
| 5  | Adjuster Button               | 15 | Harness Slots       |
| 6  | Adjuster Strap                | 16 | Base Attachment Bar |
| 7  | Lap Belt Guides               | 17 | Harness Straps      |
| 8  | Integrated stroller adapters* | 18 | Splitter Plate      |
| 9  | Handle Button                 | 19 | Base Attachment Bar |
| 10 | Stroller Release Button       |    |                     |

\*compatible with Bugaboo Fox & Bugaboo Lynx strollers



## Base Parts List

- |   |                                      |    |                             |
|---|--------------------------------------|----|-----------------------------|
| 1 | Lock Off                             | 8  | Stability Leg Indicator     |
| 2 | Rigid LATCH (lower attachments)      | 9  | Stability Leg Adjust Button |
| 3 | Primary Rigid LATCH Release Button   | 10 | Car Seat Release Button     |
| 4 | Secondary Rigid LATCH Release Button | 11 | Bubble Indicator            |
| 5 | Rigid LATCH Guides                   | 12 | Instruction Manual Storage  |
| 6 | Locking Clip                         | 13 | Stability Leg Storage       |
| 7 | Stability Leg                        | 14 | Recline Adjustment          |





# Product Overview

## Bugaboo Smart Visor

- 1 - Flip out visor from underneath the front canopy bow.
- 2 - Pull out the extendable 'Smart Visor' from in between the two visor layers and attach it to the magnets on each corner at the front of the car seat.

## Canopy

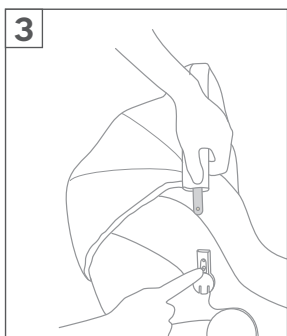
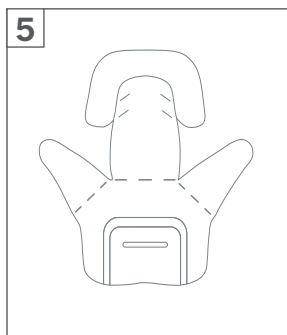
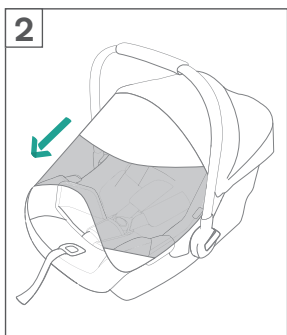
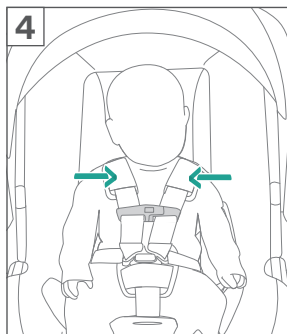
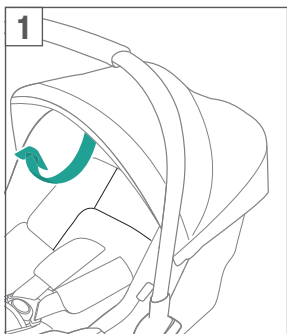
- 3 - To remove the canopy, press the button in the canopy mount and pull the canopy bow out.

## Shoulder Pads


- 4 - Shoulder pads are removable and are not necessary for safety.

## Infant Insert

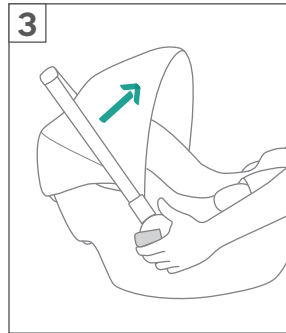
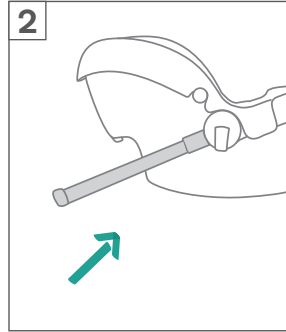
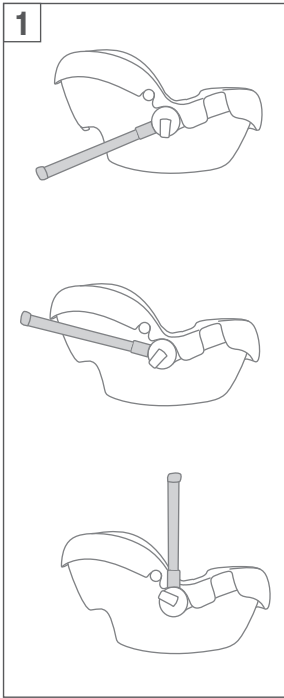
- 5 - The infant insert can be used as necessary, to provide a snug fit for small babies. The low birth weight pillow can be used in the infant insert for even smaller babies, but should be removed once a snug fit can be achieved without it, at approximately 11 lb.



## Handle Adjustment

- 1** - The carrier handle can be adjusted to 3 positions.
  - 2** - To adjust the handle position, squeeze handle buttons on both sides.
  - 3** - Rotate handle until it clicks into any of the 3 positions. Handle can be used in vehicle in any locked position.
-  Be sure handle is locked in the carry position before lifting child restraint by handle. An unlocked handle could move unexpectedly, causing injury to child.

Handle **MUST NOT** contact the vehicle interior (side of car or seat in front) when installed.

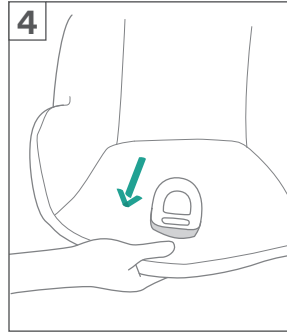
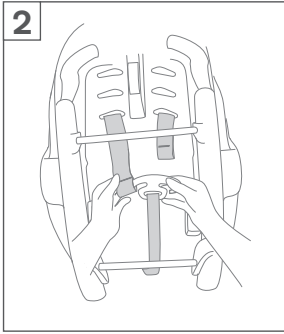
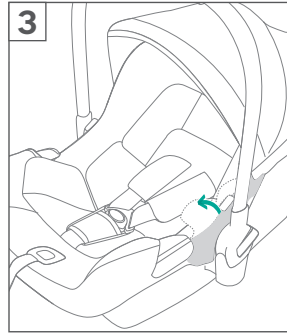
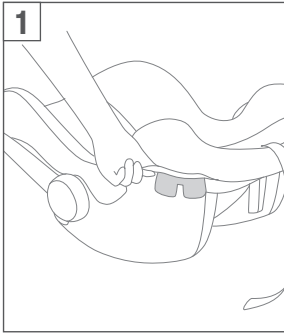


## Seat Pad

- 1** - Pull out the fastening pieces underneath the edge of the seat.

The best way to work this area (as some seat pads feel more tight in this area than others) is to pull the fabric towards the front of the seat at one corner. Once you have one corner out, you can easily work the other side out.

- 2** - Remove the harness from the splitter plate.
- 3** - Remove the seat pad from the stroller release buttons as shown.
- 4** - Grasp the seat pad at the bottom of the adjuster button as shown and pull the seat pad out from under one edge of the adjuster button. Work around the adjuster button to release the remainder of the seat pad.

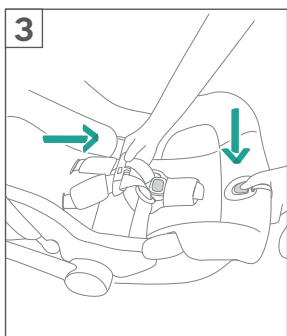
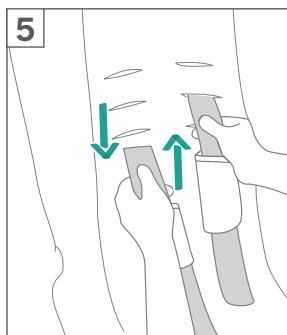
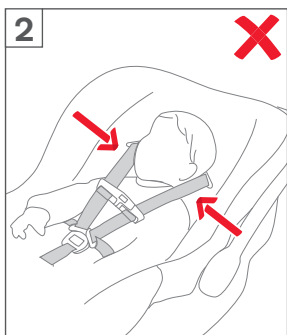
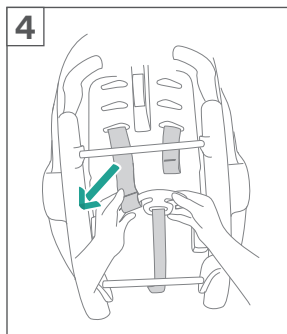
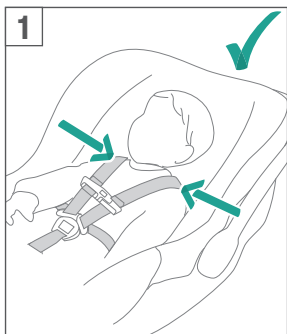






## Shoulder Belts

- 1** - Tighten harness to fit snugly on child's shoulders. It is snug if you cannot pinch a fold in the strap.
- 2** - Harness straps must be **at or just below** shoulders.
- 3** - To adjust shoulder harness height, remove child and loosen harness.
- 4** - Turn child restraint over and remove one harness loop from metal splitter plate.
- 5** - Pull loose ends of harness out through slots and place in correct slot.





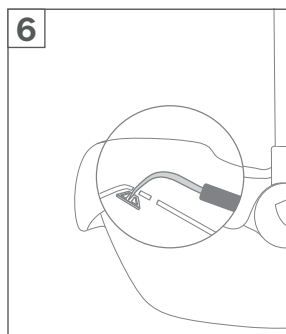
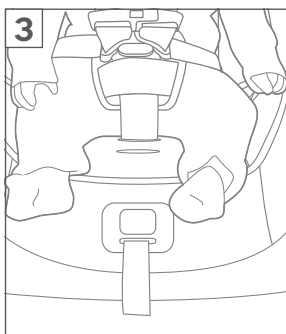
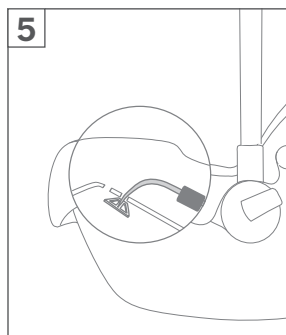
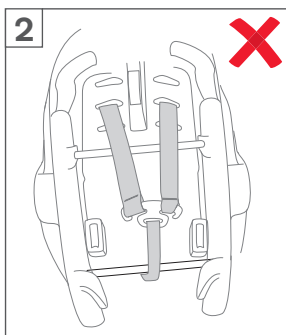
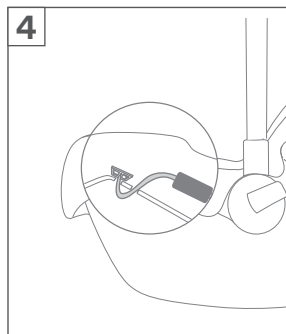
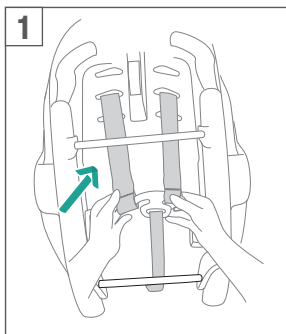




- 
- 1 - Re-attach harness loops to splitter plate.
- 2 -  Do not allow harness to pass over bars.
- Repeat process for second shoulder harness strap.

### **Crotch Belt**

- 3 - Identify crotch belt slot that will achieve a snug fit for your child. Three crotch belt positions are provided to achieve a snug fit as your baby grows. Change crotch belt slot as necessary.
- 4 - The position shown provides the smallest fit. Crotch belt is threaded through rear slot and up through front slot as shown.
- 5 - This position provides a medium fit. Crotch belt is threaded into rear slot as shown.
- 6 - This position provides the largest fit. Crotch belt is threaded through front slot as shown.
- 
- 



## Product Use

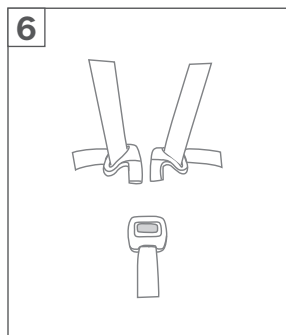
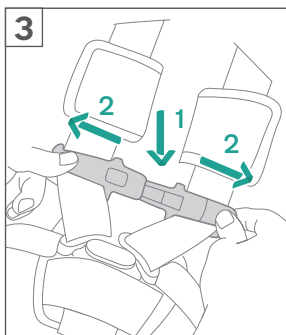
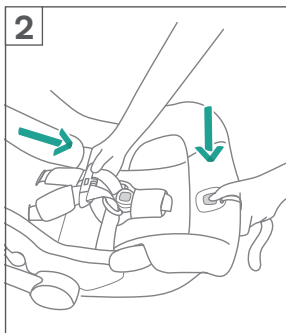
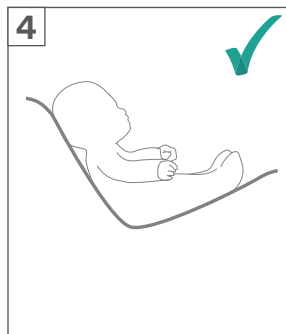
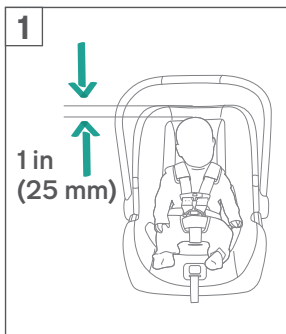
- 1 - Top of child's head is at least 1" below top of child restraint.

### Securing Child in Child Restraint

- 2 - Loosen harness by pressing on adjuster button while pulling on the harness straps.
- 3 - Press button to release the buckles. Separate chest clip and spread harness straps apart.
- 4 - Place child in child restraint in seated position.
- 5 - The child should be seated against both the back and bottom of the seat with no gap behind the child. Do not allow child to slouch.

Gently guide child's arms through harness loops.

- 6 - Insert buckle tongues into buckle.




- 1 - Listen for clicks. Pull on buckle to verify it is latched.
- 2 - Snap the chest clip together and temporarily slide towards buckle for tightening of harness.
- 3 - Tighten harness by pulling on the adjuster strap. Pull any excess harness webbing through the buckle towards the child's shoulders and pull on the adjuster strap. This may need to be repeated several times for proper fit.

Verify that the harness is snug around the child's waist and shoulders.

- 4 - Position the chest clip at child's armpit level.

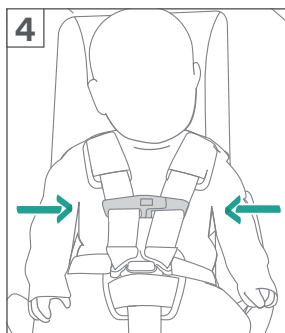
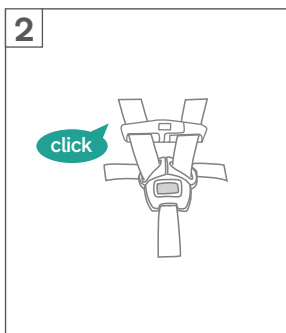
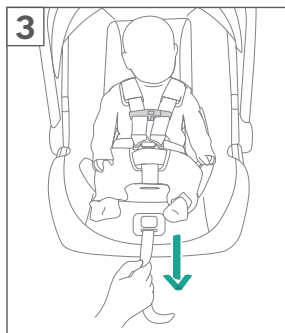
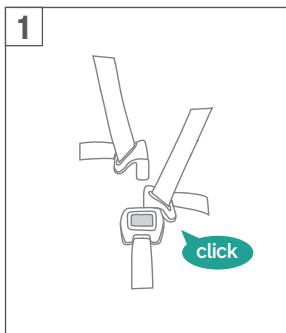
### Check that Child is Secure

- Buckle is fastened.
- Harness straps are not twisted.
- Harness is snug – A snug harness cannot be pinched, and should not allow any slack.
- Chest clip is level with armpits.


-  **Warning:** Harness straps must be **at or just below** child's shoulders to avoid injury. If harness slots need to be moved, see Shoulder Belts section.

Make sure that nothing interferes with the harness. Make sure harness is snug around child and lays flat. Serious injury or death could occur to a child that is not secured properly.


If child is not secured properly, child could be ejected in a sudden stop or crash, resulting in serious injury or death.

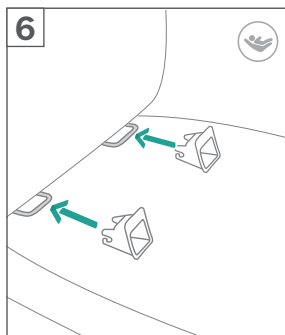
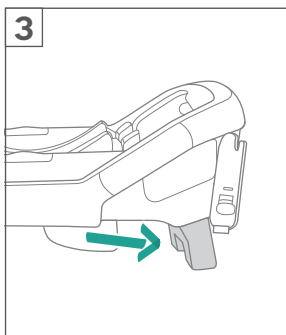
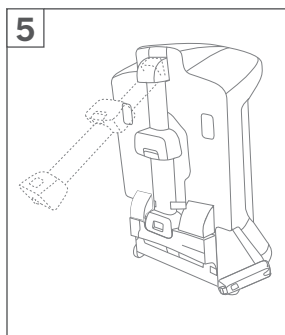
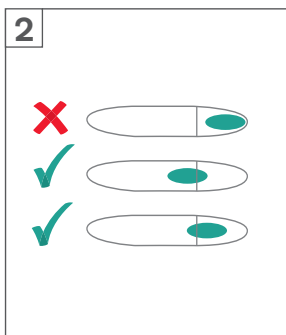
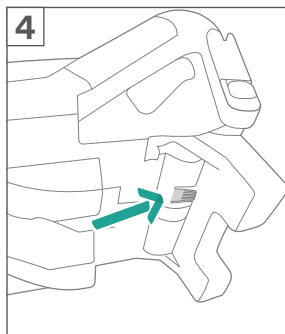
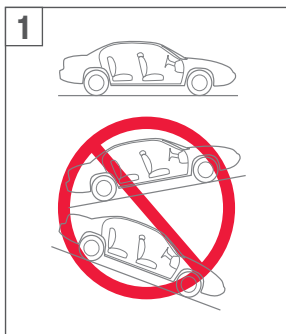


# Installation


-  If child is not secured properly, child could be ejected in a sudden stop or crash, resulting in serious injury or death.

## Base Installation Using Rigid LATCH (Lower Attachments)

- 1 - Place vehicle in park and on level ground.
- 2 - Position base in a forward facing vehicle seat. Use recline adjustment to position bubble in indicator. Adjust base so bubble touches line.
- 3 - Use recline adjustment to achieve correct angle for installation. Recline adjustment locks into position.
- 4 - To release, press down on lock button.
- 5 - When installing with the base, additional stability can be achieved by using the stability leg. For instructions on using the stability leg when installing the base, see stability leg section.
- 6 - If necessary, install rigid LATCH guides on vehicle  LATCH lower anchor bars.






- 1 - Rotate Rigid LATCH (lower attachments) down.
  - 2 - Hook Rigid LATCH onto vehicle LATCH lower anchor bars.
  - 3 - Confirm proper installation by pulling on the base AND also seeing that green is indicated on the connectors.
-  The Rigid LATCH (lower attachments) must be attached and locked onto the vehicle anchor bars.

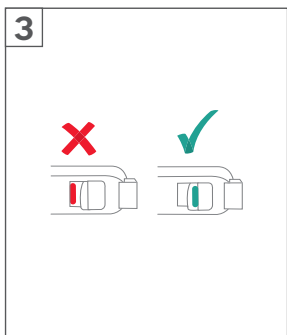
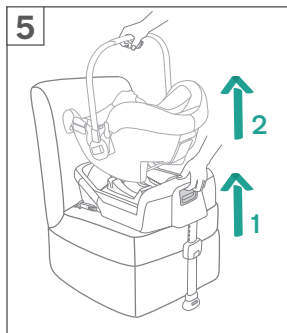
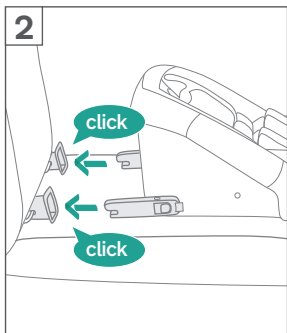
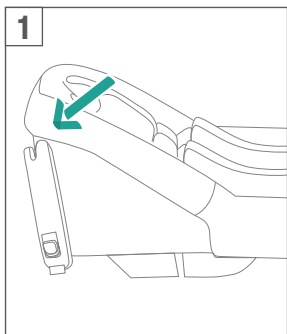
### Check Installation


- Base should not move side to side or forward more than 1" at belt path.
- Bubble must be touching line. Use recline adjustment, if needed, to position bubble.

It is acceptable to install with both LATCH (lower attachments) and the vehicle belt.



### Attaching Child Restraint to Base

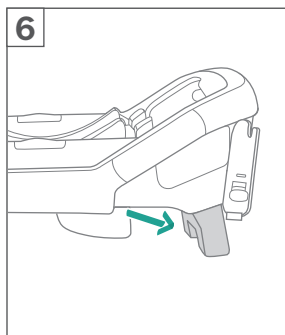
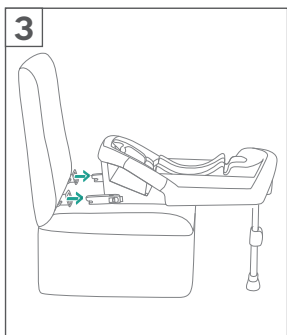
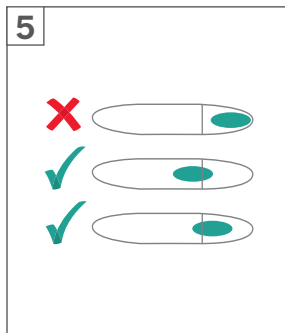
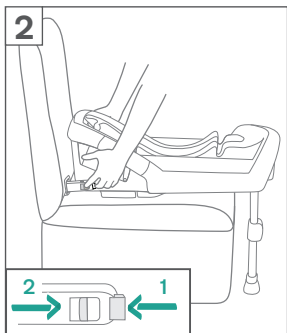
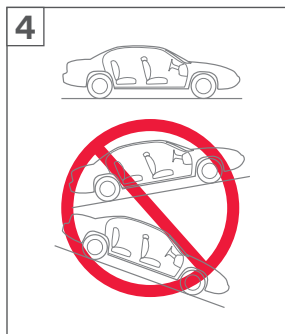
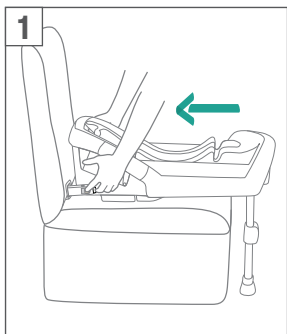
- 4 - After child is properly secured in child restraint, press child restraint on base and listen for a click. Pull on child restraint to verify installation.
-  **DO NOT** allow child restraint to contact the vehicle interior (side of car or seat in front) when installed.
- 5 - To release the child restraint, squeeze the car seat release button (1) located on the base, while pulling the child restraint up (2).





- 
- 1** - To remove the base, first push the base toward the vehicle seat with a light force.
- 2** - As you push the base toward the vehicle seat, squeeze the secondary **(1)** and primary rigid LATCH release buttons **(2)**.
- \*For ease of release, push the secondary button first, then the primary button.
- 3** - Then pull the base off of the lower anchor bars.

### **Installation Using Lap & Lap/Shoulder Belt**

- 4** - Place vehicle in park and on level ground.
- 5** - Position base in a forward facing vehicle seat. Use recline adjustment to position bubble in indicator. Adjust base so bubble touches line.
- 6** - Use recline adjustment to achieve correct angle for installation.
- 
- 

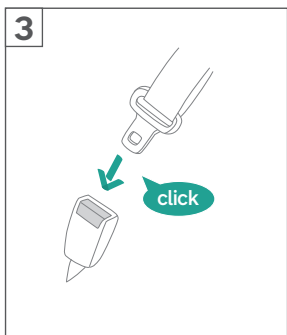
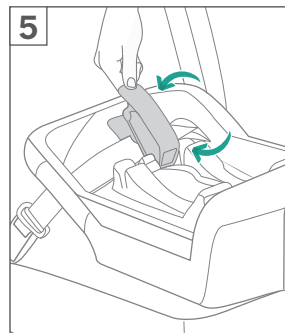
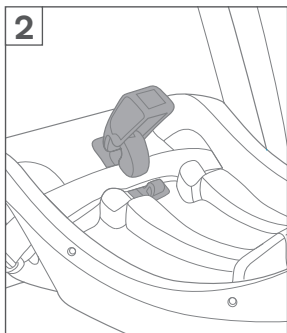
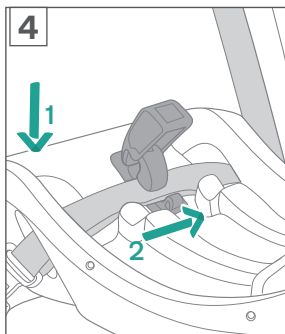
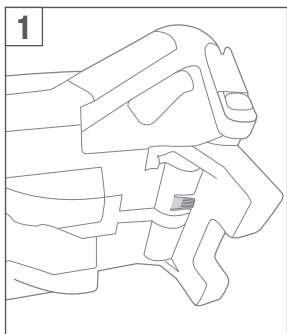



- 
- 
- 1** - Recline adjustment locks into position. To release press down on lock button. When installing with the base, additional stability can be achieved by using the stability leg. For instructions on using the stability leg when installing the base, see Stability Leg section.
  - 2** - Route the vehicle belt through the opening in the base labeled 'belt here'.
  - 3** - Buckle the vehicle belt. Both the shoulder **AND** lap belt must be under the blue lock off and belts must lay flat.
  - 4** - While pressing the base into the vehicle seat **(1)**, tighten the vehicle belt by pulling straight along the belt path **(2)**, keeping both belts laying flat in the lock off.
  - 5** - While the shoulder belt is tight, hook the bottom of blue lock off and press to close the lock off on the shoulder and lap belt.  
If vehicle only has a lap belt, then put lap belt under blue lock off.

### **Check Installation**

- Belts must be tight.
- Base should not move side to side more than 1" at belt path.
- Bubble must be touching line.
- Belts and buckles must not interfere with attachment of child restraint to base.
- Vehicle belts must lay flat under lock off.

It is acceptable to install with both LATCH (lower attachments) and the vehicle belt.



- 
- 1** - After child is properly secured in child restraint, press child restraint on base and listen for a click. Pull on child restraint to verify installation.

**⚠** **DO NOT** allow child restraint to contact the vehicle door or seat in front of it.

- 2** - To release the child restraint, squeeze the car seat release button **(1)** located on the base, while pulling the child restraint up **(2)**.

- 3** - To remove the base, lift up on the lock off.

- 4** - Unbuckle the vehicle belt and un-route the shoulder and lap belt from the base.

Then remove the base.



## Stability Leg



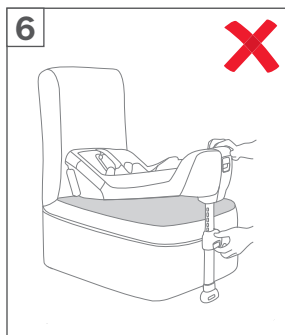
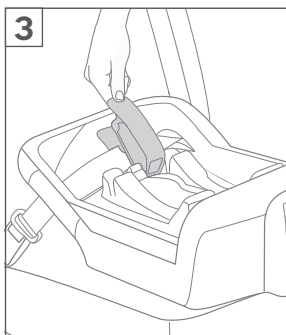
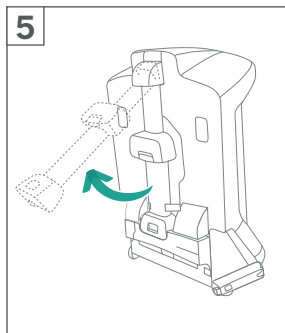
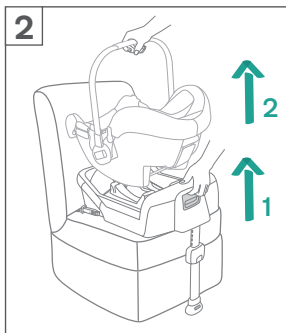
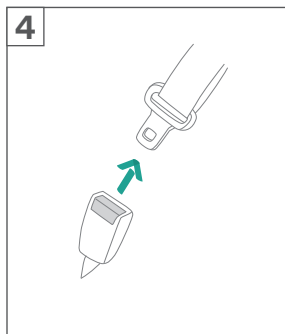
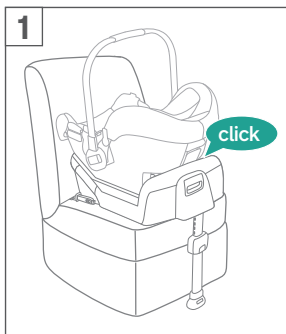
Refer to vehicle owner's manual to determine if stability leg can be used over a vehicle storage compartment.

- 5** - Unfold the stability leg from storage compartment.


- 6** - Do not use if stability leg lifts base off seat.


**⚠** Do not use stability leg to recline the base. The recline adjustment feature is meant to recline the base.

Always store stability leg when not in use.







- 
- 1 - After correctly installing the base on the vehicle seat, press the stability leg adjust button to extend the stability leg to the floor.
- 2 - Stability leg should make firm contact with the vehicle floor.
- 3 - Indicators should show green.

 When the stability leg indicator shows red this means the stability leg is in the wrong position. Make sure the stability leg is secure and makes firm contact with the vehicle floor. The stability leg indicator shows green when it is properly contacting the floor of the vehicle.


The stability leg has 12 positions.

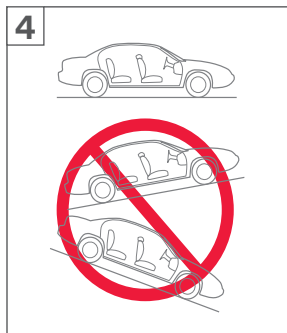
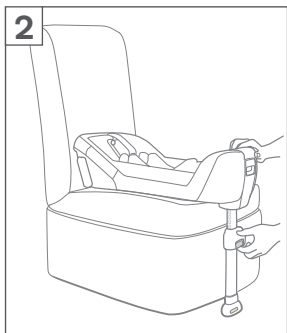
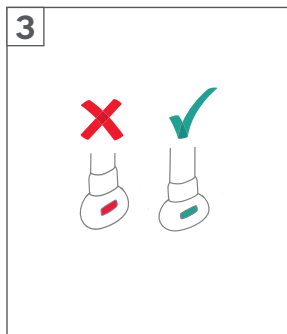
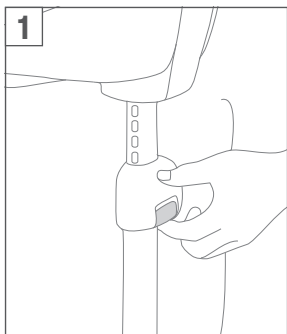
This seat is safe to use with stability leg in use or stored for both rigid LATCH or vehicle belt installation.





## **Child Restraint Only Install**

This child restraint can be installed without a base in 3 different ways.

- 4 - Place vehicle in park and on level ground. Position child restraint so that child is facing the rear of the vehicle.
-  Only install in a forward facing vehicle seat.

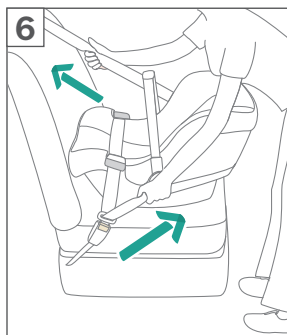
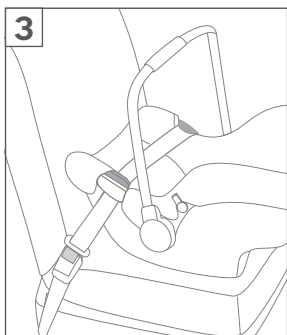
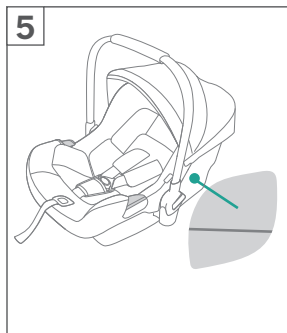
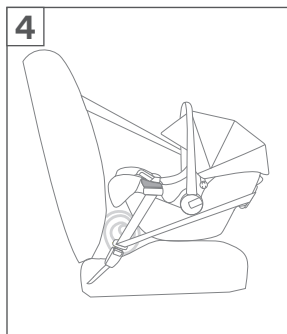
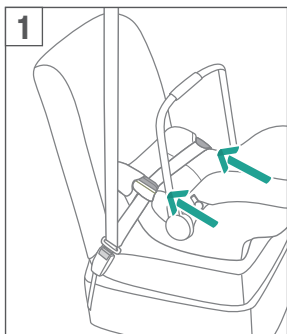


- 
- 
- 1 - Option 1:** Route the vehicle lap belt under both lap belt guides and buckle the vehicle belt. Allow shoulder belt to lay against vehicle seat back as shown.
  - 2 - Option 2:** Route the shoulder belt around the back of the child restraint passing through the blue shoulder belt guide.
  - 3 - Option 3:** If your vehicle does not have a shoulder belt, the lap belt only can be used.
  - 4 -** Adjust the angle of the child restraint. A rolled up towel or foam pool noodle may be used to help adjust the amount of recline.
  - 5 -** Angle is correct when blue line on child restraint (located on the label on the side of the child restraint) is level with ground.
  - 6 -** Tighten vehicle belt while pushing child restraint firmly into vehicle seat. Lock the vehicle belt. Refer to vehicle owner's manual for instructions. If you cannot lock the vehicle belt, you must use the provided locking clip.

Tension the vehicle belt as much as possible, checking that it is not loose or twisted.

### **Check Installation**

- Blue line must be level with ground.
- Vehicle belt must be buckled, tight and must stay locked.
- Child restraint should be stable and not move side to side more than 1 inch at belt path.



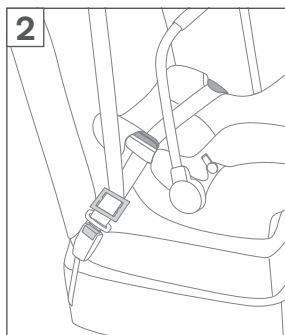
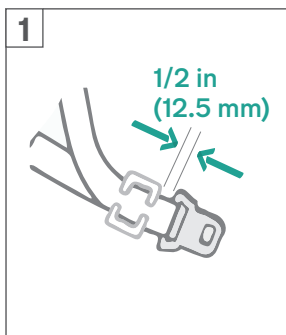
## Locking Clip Use

If you determine that you need to use a locking clip, tighten the buckled belt by pushing down hard on the infant child restraint and pulling hard on the shoulder belt.

While pushing down on child restraint, pinch the two straps together behind the buckle tongue. Unbuckle the vehicle belt without allowing it to slip.

- 1 - Connect lap and shoulder belts with locking clip.
- 2 - Reroute vehicle belt if necessary. Check that lap belt does not move by pulling and pushing hard on infant restraint. If belt loosens or lengthens, repeat procedure.

**⚠** The locking clip should be 1/2 inch (12.5 mm) from the vehicle buckle.



## Installation in an Aircraft

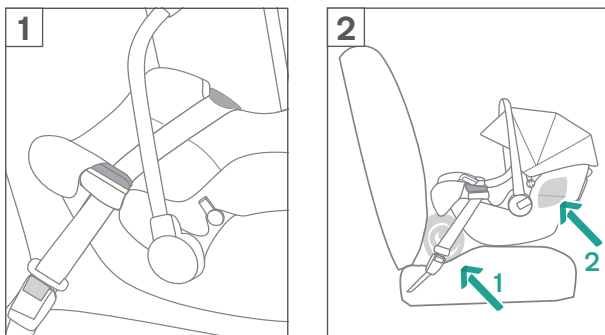
Position child restraint so that child is facing the aircraft seat back.

- 1** - Route the aircraft lap belt under both lap belt guides and buckle.
- 2** - Adjust the angle of the child restraint. A rolled up towel or blanket may be used to help adjust the amount of recline (**1**). The angle is correct when the blue line is level with the floor of the aircraft (**2**).

Tighten the aircraft belt while pushing the child restraint firmly into the seat.

When installing in an airplane using a base, follow the instructions for vehicle installation with a base using lap belt only.

This child restraint is certified for use in commercial aircraft with or without the base. Be sure to contact your airline prior to travel to discuss their use policy.





## Installation on a Stroller






This carrier can attach smoothly to the Bugaboo Fox and Bugaboo Lynx strollers without any additional adapters.

- 1 - Always apply the brake when placing the car seat on or releasing it from the stroller.
- 2 - Click the car seat onto the stroller base with the child facing parent.

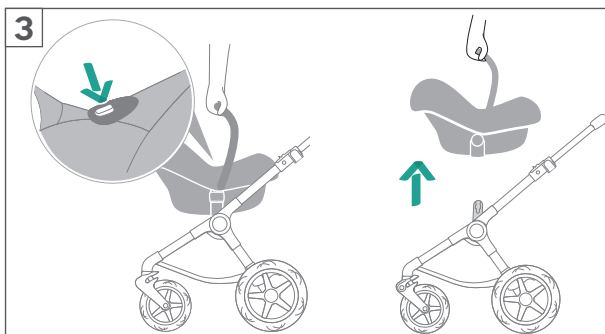
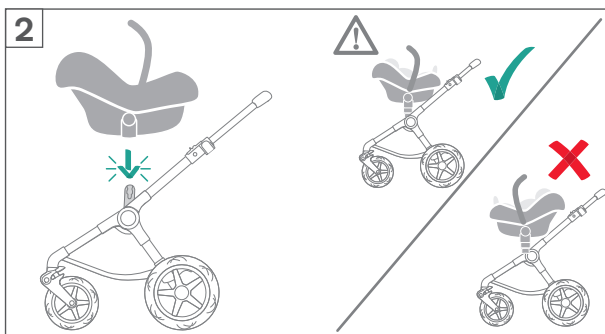
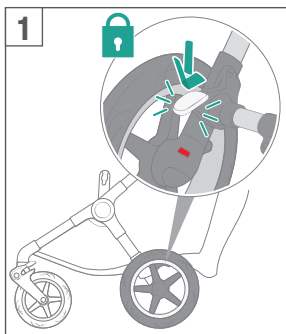
### Check Installation

- Pull up on carrier to make sure attachment is secure.

- 3 - Push the stroller release buttons on both sides of the car seat simultaneously to release the car seat.

-  The locking clip should be 1/2 inch (12.5 mm) from the vehicle buckle.
-  Maximum weight per child per car seat on the stroller is 13 kg (28.6 lbs).
-  Do not move the stroller and car seat assembly by the handle of the car seat.
-  Check that the car seat attachment devices are correctly engaged before use.
-  The car seat adapter interface may present a pinching hazard. Ensure all fingers and appendages are clear of the car seat adapter when mounting the car seat.









---

---


## Cleaning and Maintenance

Refer to the care label attached to the soft goods for washing and drying instructions.


**DO NOT** attempt to remove the foam under the seat pad.

Use only mild detergent, water and a soft cloth to clean the infant carrier shell, handle and harness straps. Air dry.

To clean the buckle: rinse using warm water. **DO NOT** use any soaps, solvents or lubricants. Using anything other than water can cause the buckle to malfunction. Air dry.



Remove the child restraint from the vehicle seat if not in use for a long period of time. Put the infant carrier in a cool, dry place and somewhere your child cannot access it.



It is normal for fabric to color from sunlight and to show wear and tear after a long period of use, even when used normally.

Check regularly if everything functions properly. If any parts are torn, broken, or missing, stop using this product.



The information contained herein is subject to change without notice. Bugaboo International BV shall not be liable for technical errors or omissions contained herein. The purchased product may differ from the product as described in this user guide. Our most recent user guides can be requested at our service departments or at [www.bugaboo.com](http://www.bugaboo.com).

© 2019 Bugaboo International BV. BUGABOO, BUGABOO FOX, BUGABOO CAMELEON, BUGABOO BEE, BUGABOO DONKEY, BUGABOO BUFFALO, RUNNER, BUGABOO BOXER and the Bugaboo logos are registered trademarks. The Bugaboo® strollers are patented and design protected.

©2019 Nuna Baby Essentials, Inc. Nuna and all associated logos are trademarks.







